



INFUSED WITH NATURAL  
**AUSTRALIAN BOTANICALS**  
FOR SHINY, SOFT BEAUTIFUL HAIR  
SULPHATE FREE / PARABEN FREE / VEGAN FRIENDLY

**juuce**  
for thirsty hair

A woman's face is the central focus, looking directly at the camera. The image is overlaid with a diagonal split: the left side is a light blue color, and the right side is a light brown color. In the bottom left corner, there are several aloe vera leaves, some whole and some cut open to show the inner gel. In the bottom right corner, there is a glass of orange juice. The text is centered over the woman's face.

**INFUSED WITH NATURAL  
AUSTRALIAN BOTANICALS  
AUSTRALIAN OWNED AND MADE**

**juuce**  
for thirsty hair

**JUUCE HAIR CARE IS INFUSED WITH SIX OF THE MOST POWERFUL NATURAL AUSTRALIAN BOTANICALS**

**SOOTHING QUANDONG**



**PROTECTING DANDELION**



**MOISTURISING ALOE VERA**



**6**

**SMOOTHING DESERT LIME**



**COLOUR EXTENDING KAKADU PLUM**



**REPAIRING WATTLE SEED**



Juuce hair care is infused with six of the most powerful natural Australian botanicals

**DANDELION . ALOE VERA . KAKADU PLUM . WATTLE SEED . DESERT LIME . QUANDONG**

These ingredients provide all hair types with the essential elements to

**PROTECT . MOISTURISE . COLOUR EXTEND . REPAIR . SMOOTH . SOOTHE**

The use of natural botanicals can boost your hair with basic elements necessary for hair to stay healthy, strong and not vulnerable to the external environment.

# PROTECTING DANDELION

---



Dandelion root is a rich source of vitamin A, C, and E as well as B-complex vitamins. Every part of the dandelion plant is rich in antioxidants that prevent free-radical damage.

---

# MOISTURISING ALOE VERA

---



Aloe vera contains proteolytic enzymes which act as a moisturiser to condition and leave your hair smooth and shiny. It promotes hair growth, prevents itching on the scalp and reduces dandruff.

---

# COLOUR EXTENDING KAKADU PLUM

---



Kakadu plum is Australia's super natural ingredient performer with exceptional antioxidant composition. It is believed that Kakadu plum could provide the most powerful natural anti colour fade treatment.

---

# REPAIRING WATTLE SEED

---



Wattle seed contains high levels of amino acids to help repair and promote youthful hair. The powerful antioxidant properties encourage elasticity and suppleness in ageing cells promoting healthy cell turnover.

---



# SMOOTHING DESERT LIME

---



Desert lime is an anti-humectant with high levels of glycosides for hydrating and promoting smoother, softer looking hair, also assisting with blocking out short UV rays acting as a natural sunscreen.

---

# SOOTHING QUANDONG

---



Quandong is super high in antioxidants, which are important for fighting free radicals. Quandong contains vitamin C which is essential for the growth of healthy cells. It also contains vitamin E which is a powerful hydrating nutrient.

---



SHAMPOO / CONDITIONER

**juuce**  
for thirsty hair

# COLOUR LIFE

---



## COLOUR PROTECTION SHAMPOO/CONDITIONER

Shields colour treated dry – very dry hair by defending against the enemies that cause colour fade whilst adding condition and shine. Powerful antioxidants repair and moisturise to increase colour lasting power and intensity.

Anti-heat + UV + humidity + oxidation protection.

## PROTECT . REVIVE . DEFEND COLOUR

---



PROTECTING DANDELION



MOISTURISING ALOE VERA



COLOUR EXTENDING KAKADU PLUM



REPAIRING WATTLE SEED



SMOOTHING DESERT LIME



SOOTHING QUANDONG

# ULTRA REPAIR

---



## REPAIRING SHAMPOO/CONDITIONER

Rejuvenates all damaged very dry – ultra dry hair with nourishing active ingredients and natural smoothing agents which penetrate deep into the core of the hair. Restores internal strength to reinforce, protect and smooth the cuticle surface. Anti-heat + UV + humidity + oxidation protection.

**NOURISH . REPAIR . REJUVENATE**



PROTECTING DANDELION



MOISTURISING ALOE VERA



COLOUR EXTENDING KAKADU PLUM



REPAIRING WATTLE SEED



SMOOTHING DESERT LIME



SOOTHING QUANDONG

**juuce**  
for thirsty hair

# MIRACLE D.FRIZZ

---



## SMOOTHING SHAMPOO/CONDITIONER

Tames all types of frizzy, coarse, unruly very dry – extremely dry hair with intensive smoothing agents to reduce volume. Contains ultimate cuticle smoothing properties to maintain smooth, silky soft hair.

Anti-heat + UV + humidity + oxidation protection.

**TAME FRIZZ . SMOOTH . CALM CURL**



PROTECTING DANDELION



MOISTURISING ALOE VERA



COLOUR EXTENDING KAKADU PLUM



REPAIRING WATTLE SEED



SMOOTHING DESERT LIME



SOOTHING QUANDONG

**juuce**  
for thirsty hair

# ARGAN SOFT

---



## SOOTHING SHAMPOO/CONDITIONER

Infused with argan oil and conditioning agents to nourish, strengthen and replenish frizzy, fragile very dry – extremely dry hair. Provides shine, manageability, movement and extreme softness. Anti-heat + UV + humidity + oxidation protection.

**REPLENISH . SOOTHE . STRENGTHEN**

---



ARGAN OIL



PROTECTING DANDELION



MOISTURISING ALOE VERA



COLOUR EXTENDING KAKADU PLUM



REPAIRING WATTLE SEED



SMOOTHING DESERT LIME



SOOTHING QUANDONG

# SILK HYDRATE

---



## HYDRATING SHAMPOO/CONDITIONER

Instantly begins to restore natural moisture and protein balance to all chemically treated dry – very dry hair. Strengthens to boost resistance to breakage and reduce the formation of split ends. Anti-heat + UV + humidity + oxidation protection.

**MOISTURISE . HYDRATE . RESTORE**



PROTECTING DANDELION



MOISTURISING ALOE VERA



COLOUR EXTENDING KAKADU PLUM



REPAIRING WATTLE SEED



SMOOTHING DESERT LIME



SOOTHING QUANDONG

**juuce**  
for thirsty hair



# FULL VOLUME

---



## THICKENING SHAMPOO/CONDITIONER

Body boosting carbohydrates and thickening polymers increase volume while strengthening. Weightless conditioning agents improve manageability in all types of fine hair.

Anti-heat + UV + humidity + oxidation protection.

**THICKEN . BOOST . INCREASE VOLUME**

---



PROTECTING DANDELION



MOISTURISING ALOE VERA



COLOUR EXTENDING KAKADU PLUM



REPAIRING WATTLE SEED



SMOOTHING DESERT LIME



SOOTHING QUANDONG

**juuce**  
for thirsty hair

# ULTRA BLONDE

---



## TONING SHAMPOO/CONDITIONER

Infused with argan oil and conditioning agents to nourish all types of blonde hair, while reducing gold and yellow tones with blue violet pigments.

Anti-heat + UV + humidity + oxidation protection.

**SOOTHE . TONE . REDUCE YELLOW**

---



ARGAN OIL



PROTECTING DANDELION



MOISTURISING ALOE VERA



COLOUR EXTENDING KAKADU PLUM



REPAIRING WATTLE SEED



SMOOTHING DESERT LIME



SOOTHING QUANDONG

**juuce**  
for thirsty hair

# SILVER BLONDE

---



INTENSE TONING SHAMPOO/CONDITIONER  
Micro blue violet colour pigments penetrate deeper into the hair shaft dramatically reducing gold and yellow tones in all blonde, bleached and highlighted hair.  
Anti-heat + UV + humidity + oxidation protection.

**REMOVE YELLOW . SAVE BLONDE . INTENSE TONE**

---



MICRO BLUE VIOLET PIGMENTS



PROTECTING DANDELION



MOISTURISING ALOE VERA



COLOUR EXTENDING KAKADU PLUM



REPAIRING WATTLE SEED



SMOOTHING DESERT LIME



SOOTHING QUANDONG

# PEPPERMINT

---



## SCALP STIMULATING SHAMPOO/CONDITIONER

Blended with invigorating natural botanicals and oils which treat the hair and invigorate the scalp making them healthier, cleaner and stronger.

Anti-heat + UV + humidity + oxidation protection.

**STIMULATE . TREAT . CARE FOR SCALP**

---



PEPPERMINT OIL



PROTECTING DANDELION



MOISTURISING ALOE VERA



COLOUR EXTENDING KAKADU PLUM



REPAIRING WATTLE SEED



SMOOTHING DESERT LIME



SOOTHING QUANDONG

# DEEP CLEANSE

---



## HIGH CLEANSE SHAMPOO

Removes styling product, grime and chlorine build up in all hair types. Regular use controls an oily scalp whilst protecting against dry ends with non-oily moisturising agents. Anti-heat + UV + humidity + oxidation protection.

## INVIGORATE . CLEAN . CARE FOR SCALP



PROTECTING DANDELION



MOISTURISING ALOE VERA



COLOUR EXTENDING KAKADU PLUM



REPAIRING WATTLE SEED



SMOOTHING DESERT LIME



SOOTHING QUANDONG

# ANTI-DANDRUFF

---



## FLAKE REMOVING SHAMPOO

Removes flakiness and relieves itchy scalp with soothing botanical extracts to control dandruff and scalp irritations. Anti-heat + UV + humidity + oxidation protection.

**REDUCE FLAKE . SOOTHE . REFRESH SCALP**



PROTECTING DANDELION



MOISTURISING ALOE VERA



COLOUR EXTENDING KAKADU PLUM



REPAIRING WATTLE SEED



SMOOTHING DESERT LIME



SOOTHING QUANDONG

**juuce**  
for thirsty hair

WITHOUT WATER

**juice**  
for thirsty hair

# DIRTY DEEDS

---



## DRY SHAMPOO

Cleans hair without water with unique, natural, absorbing powder spray that gently removes dirt, styling aids and excess oil to leave hair feeling clean, soft and smelling fresh.

**REFRESH . CLEANSE . WITHOUT WATER**



# SILKY SOFT XPRESS

---



## DRY CONDITIONER

Express conditioning without water and 10 instant benefits –  
detangle, moisturise, smooth, repair cuticle, control flyaway, shine,  
silky conditioner, soften, restore, reduce frizz.

**SMOOTH . D.FRIZZ . REPAIR ENDS . WITHOUT WATER**

---

DETANGLE . MOISTURISE . SMOOTH . REPAIR CUTICLE . CONTROL FLYAWAY  
SHINE . SILKY CONDITIONER . SOFTEN . RESTORE . REDUCE FRIZZ

# INTENSE NOURISHING MASK

**juuce**  
for thirsty hair

# REPAIR MASK



## TREATMENT

Intense soothing and replenishing for stressed hair with shea butter repairing and natural botanicals. Restore shiny, soft beautiful hair nourishing stressed hair types. Anti-heat + UV + humidity + oxidation protection.

**REPAIR . SOOTHE . REPLENISH**



SHEA BUTTER



PROTECTING DANDELION



MOISTURISING ALOE VERA



COLOUR EXTENDING KAKADU PLUM



REPAIRING WATTLE SEED



SMOOTHING DESERT LIME



SOOTHING QUANDONG

# BLONDE MASK

---



## TREATMENT

Revives very dry/damaged blonde hair with shea butter repairing and argan oil smoothing to restore strength to the inner and outer hair shaft. Botanically boosted to nourish brittle blondes and pigmented to cancel yellow tones. Anti-heat + UV + humidity + oxidation protection.

**RESTORE . TONE . REVIVE**



SHEA BUTTER



PROTECTING DANDELION



MOISTURISING ALOE VERA



COLOUR EXTENDING KAKADU PLUM



REPAIRING WATTLE SEED



SMOOTHING DESERT LIME



SOOTHING QUANDONG

# MOISTURE MASK

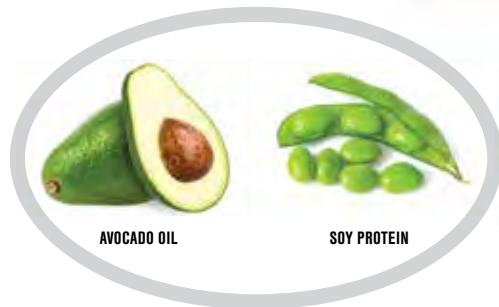


## TREATMENT

Intense hydration to restore and retain moisture with avocado oil and soy protein to smooth and soothe all dehydrated hair types. Botanically boosted to revive and maintain soft, shiny, smooth hair.

Anti-heat + UV + humidity + oxidation protection.

**HYDRATE . D.FRIZZ . SMOOTH**



AVOCADO OIL

SOY PROTEIN



PROTECTING DANDELION



MOISTURISING ALOE VERA



COLOUR EXTENDING KAKADU PLUM



REPAIRING WATTLE SEED



SMOOTHING DESERT LIME



SOOTHING QUANDONG



REPAIR/RECONSTRUCT TREATMENT

**juuce**  
for thirsty hair

# SHOCK TREATMENT

---



## COLOUR LOCK REPAIR TREATMENT

Collagen reinforced colour preserving treatment locks in colour and defends to extend colour life. Collagen plays a big part in renewing cells and is responsible for maintaining the strength and elasticity in hair as well as hydrating and strengthening damaged hair by restoring moisture and nourishment. Botanically enriched with six organic ingredients to revitalise hair and scalp. Anti-heat + UV + oxidation protection.

**STRENGTHEN . HYDRATE . PROTECT COLOUR**

---



COLLAGEN



PROTECTING DANDELION



MOISTURISING ALOE VERA



COLOUR EXTENDING KAKADU PLUM



REPAIRING WATTLE SEED



SMOOTHING DESERT LIME



SOOTHING QUANDONG

# 1 MINUTE TREATMENT



## REPAIR BONDING TREATMENT

Moroccan lava clay treatment is an intense 60 second repair treatment with Australian natural botanicals which instantly saturates extremely dry or damaged hair to rejuvenate, restore and rebond. Moroccan lava clay acts to moisturise and soften. It reduces dryness while also removing toxins and product buildup improving hair's elasticity and unblocking the pores of your scalp. Anti-heat + UV + humidity + oxidation protection.

**RESTORE . REBOND . REJUVENATE**



MOROCCAN LAVA CLAY



PROTECTING DANDELION



MOISTURISING ALOE VERA



COLOUR EXTENDING KAKADU PLUM



REPAIRING WATTLE SEED



SMOOTHING DESERT LIME



SOOTHING QUANDONG





**30 SECOND RECONSTRUCTANT TREATMENT**

**juuce**  
for thirsty hair



## **INTENSE-LOK MAJIK** INSTANT 30 SECOND TREATMENT

Instant 30 second double action repair treatment reconstructs all weak, damaged hair and locks in moisture to defend against heat and other damaging elements which dehydrate and weaken the hair. Anti-heat + UV + humidity + oxidation protection.

**WITH HEAT PROTECTION**

---



## **COLOUR-LOK MAJIK** INSTANT 30 SECOND TREATMENT

Instant 30 second double action repair treatment reconstructs all coloured hair and locks in colour to defend against heat and other colour fade elements. Anti-heat + UV + humidity + oxidation protection.

**WITH HEAT PROTECTION**

---



## **BLONDE-LOK MAJIK** INSTANT 30 SECOND TREATMENT

Instant 30 second double action repair treatment reconstructs all weak, damaged blonde hair, locking in moisture to defend against heat and other damaging elements which dehydrate and weaken blonde hair. Anti-heat + UV + humidity + oxidation protection.

**WITH HEAT PROTECTION**



# BLONDE SEMI-PERMANENT CONDITIONING FOAM

**juuce**  
for thirsty hair



# BLONDE VIOLET

SEMI-PERMANENT CONDITIONING FOAM

A pale violet blonde toner that delivers temporary violet pigments to blonde hair.

Neutralises unwanted warmth and maintains colour in between salon visits.

**CONDITIONING . COLOUR . TONE BLONDE/YELLOW**



# BLONDE VIOLET PLUS

SEMI-PERMANENT CONDITIONING FOAM

A violet blonde toner that delivers temporary violet pigments to blonde hair. Micro violet pigments increase neutralising effect to cancel out unwanted gold and yellow tones in all types of blonde hair.

**CONDITIONING . COLOUR . TONE BLONDE/GOLD**



**REPAIR/PROTECT MOISTURISING LEAVE IN TREATMENT**

**juuce**  
for thirsty hair

# KNOT KNOTTY

---



## DETANGLING TREATMENT

Instantly detangles knots by smoothing the hair's cuticle surface to improve shiny condition and reduce static flyaway.

Makes all types of hair more manageable.

Anti-heat + UV + humidity + oxidation protection.

**DETANGLE . SMOOTH . CONDITION**

---



PROTECTING DANDELION



MOISTURISING ALOE VERA



COLOUR EXTENDING KAKADU PLUM



REPAIRING WATTLE SEED



SMOOTHING DESERT LIME



SOOTHING QUANDONG

# INSTANT REHAB

---



## INSTANT TREATMENT

Instantly detangles, repairs and moisturises extremely dry or damaged lifeless hair. Wheat and soy proteins combine with natural Australian botanicals to rebuild inner core strength and restore elasticity, shine and condition.

Anti-heat + UV + humidity + oxidation protection.

**REVIVE . REPAIR . RECONSTRUCT**



WHEAT PROTEIN

SOY PROTEIN



PROTECTING DANDELION



MOISTURISING ALOE VERA



COLOUR EXTENDING KAKADU PLUM



REPAIRING WATTLE SEED



SMOOTHING DESERT LIME



SOOTHING QUANDONG

# 20 IN ONE MIRACLE



## ALL IN ONE TREATMENT

Twenty instant benefits all in one treatment enforced with Moroccan lava clay and natural Australian botanicals to – detangle, repair cuticle, extend colour life, smooth, prevent colour fade, soften, control flyaway, reduce frizz, protect against heat, revive, condition, prevent sun damage, moisturise, restore, shine, seal ends, hydrate, adds body. Anti-heat + UV + humidity + oxidation protection.

**D.FRIZZ . REPAIR . MOISTURISE . PREVENT COLOUR FADE**



MOROCCAN LAVA CLAY



PROTECTING DANDELION



MOISTURISING ALOE VERA



COLOUR EXTENDING KAKADU PLUM



REPAIRING WATTLE SEED



SMOOTHING DESERT LIME



SOOTHING QUANDONG



# REVIVA CREAM



## MOISTURE FOAM TREATMENT

Instantly revives all dehydrated chemically treated hair by adding weightless moisture to detangle, condition and shine.

Strengthens all hair types and improves curl retention.

Anti-heat + UV + humidity + oxidation protection.

**DETANGLE . REVIVE . MOISTURISE . IDEAL FOR CURLY HAIR**



PROTECTING DANDELION



MOISTURISING ALOE VERA



COLOUR EXTENDING KAKADU PLUM



REPAIRING WATTLE SEED



SMOOTHING DESERT LIME



SOOTHING QUANDONG

**juuce**  
for thirsty hair

# SMOOTH ENZ

---



## LEAVE-IN ENDS REPAIR

Repairs and seals split ends, with moisture smoothing botanical oils, to d-frizz, shine and soften. Protects, smoothes and nourishes all damaged or stressed hair types. Anti-heat + UV + humidity + oxidation protection.

**MOISTURISE . SMOOTH . PROTECT**



PROTECTING DANDELION



MOISTURISING ALOE VERA



COLOUR EXTENDING KAKADU PLUM



REPAIRING WATTLE SEED



SMOOTHING DESERT LIME



SOOTHING QUANDONG

**juuce**  
for thirsty hair

# BLONDE REVIVENZ

---



## LEAVE-IN BLONDE ENDS REPAIR

Coloured with violet pigment to cancel out unwanted yellow and gold tones.

Reinforced with avocado, Blonde Revivenz repairs and seals ends with exclusive natural Australian botanicals to moisturise, d frizz, shine and soften.

Anti-heat + UV + humidity + oxidation protection.

**RESTORE . TONE . REDUCE GOLD**



AVOCADO OIL



PROTECTING DANDELION



MOISTURISING ALOE VERA



COLOUR EXTENDING KAKADU PLUM



REPAIRING WATTLE SEED



SMOOTHING DESERT LIME



SOOTHING QUANDONG

# SOLAR ENZ



## LEAVE-IN SUN PROTECTION

Collagen infused to restore moisture and strength to coloured chemically damaged hair, improving elasticity and colour retention.

Exclusive natural Australian botanicals combine to moisturise, smooth and d frizz. Maximum colour defence is assured by protecting against sun, heat, chlorine and salt. Anti-heat + UV + humidity protection.

**SAVE COLOUR . SHINE . REDUCE ENDS FADE**



PROTECTING DANDELION



MOISTURISING ALOE VERA



COLOUR EXTENDING KAKADU PLUM



REPAIRING WATTLE SEED



SMOOTHING DESERT LIME



SOOTHING QUANDONG

**juuce**  
for thirsty hair

# BOTANIC OIL SPRAY

---



## OIL TREATMENT

A daily spray in repair/protect treatment reinforced by 4 amazing oils for hair; argan, macadamia, almond and jojoba oil. These oils are instantly absorbed to create lasting colour protection, softness, shine and frizz free hair.

- Restores hair that is stressed from exposure to the elements, heat styling and colouring.
- Ongoing applications begin to improve hair condition, reducing split ends and damaged hair.
- Super moisturising, light, non-greasy formulation, instantly shines and softens without residue.
- Absorbs quickly into the hair to smooth, condition and d.frizz all hair types.
- Reduces drying time by up to 50% therefore making styling much quicker and easier.

**SMOOTH . PROTECT . SAVE COLOUR . SHINE . REDUCE ENDS FADE RESTORE . SOFTEN**

---



ARGAN OIL



MACADAMIA OIL



ALMOND OIL



JOJOBA OIL

# BOTANIC OIL SERUM

---



## **INTENSE OIL TREATMENT**

A daily ends repair/protect treatment reinforced by 4 amazing oils for hair; argan, macadamia, almond and jojoba oil. These oils are instantly absorbed to create lasting colour protection, softness, shine and frizz free hair.

- Restores hair that is stressed from exposure to the elements, heat styling and colouring.
- Ongoing applications begin to improve hair condition, reducing split ends and damaged hair.
- Super moisturising, light, non-greasy formulation, instantly shines and softens without residue.
- Absorbs quickly into the hair to smooth, condition and d.frizz all hair types.
- Reduces drying time by up to 50% therefore making styling much quicker and easier.

**REJUVENATE . SHINE . SMOOTH . TAME FRIZZ . MOISTURISE . SOFTEN . PROTECT**

---



ARGAN OIL



MACADAMIA OIL



ALMOND OIL



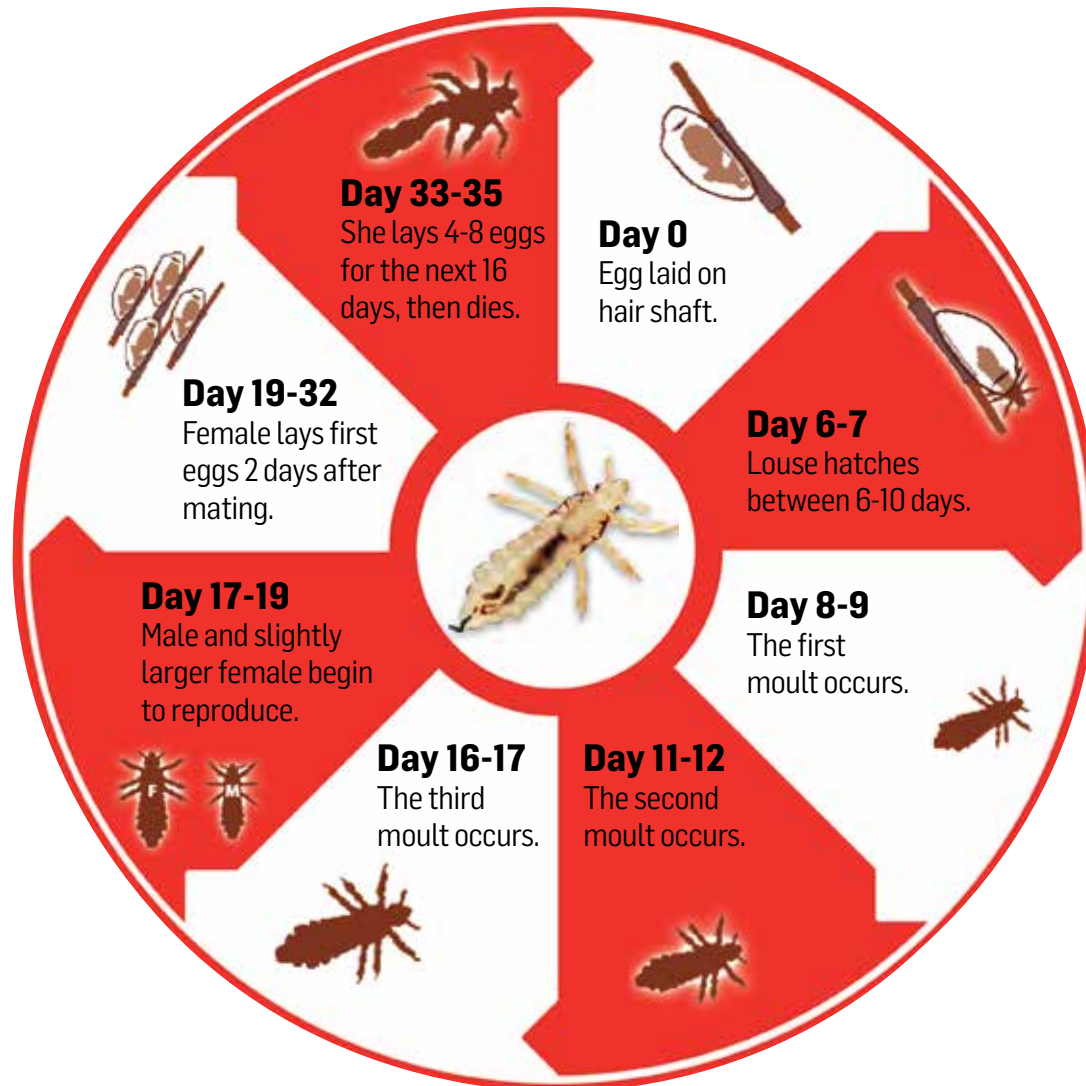
JOJOBA OIL



# HEAD LICE TREATMENT AND PREVENTION

**juuce**  
for thirsty hair

# LIFE CYCLE OF HEAD LICE



## KNITTY – ITCHY FACTS

- Females lay 50 – 150 eggs in their 4 week life span
- Head lice infect girls 2 – 4 times more than boys
- Head lice feed every 3 – 6 hours sucking blood from the scalp
- Head lice are fast and agile in their native environment – human hair
- Head lice can survive away from the scalp between 15 – 20 hours – usually to lay their eggs
- Head lice can survive in cold water and hot water under 60 degrees Celsius
- Head lice love clean, dirty, thick, thin, long or short hair
- Head lice are incapable of jumping or flying or even walking efficiently on flat surfaces
- Head lice are becoming more and more resistant to popular treatment
- Head lice do not transmit diseases
- Itchiness occurs 3 – 4 weeks after infestation
- Egg shells can stay attached to the hair until removed by abrasion or the host or until it disintegrates which may take months or years
- The glue used by the female louse to lay her eggs on the hair shaft is made of proteins similar to hair keratin





# KNOT KNITTY

## LICE GEL FAST EASY APPLICATION

A fast, safe treatment against head lice and nits (eggs). Its unique formula breaks the keratin – like glue of the nit shell from the hair shaft, killing the nit and the head lice quickly and gently after 10 mins on dry hair. The pump and clear gel formula allows for fast and easy saturation of the hair, rinsing away easily, leaving no chemical residue. Built in water activated conditioners rebalance the pH of the hair, making it safe to retreat after 7 – 10 days of initial treatment.

**EFFECTIVE . GENTLE . FAST AND EASY**

---



# KNOT KNITTY

## LICE SPRAY LEAVE-IN COMBING SPRAY

Formulated as a leave in conditioning spray that detangles to allow easy combing out of head lice and nits (eggs).  
Fragranced with spearmint essential oil to cancel out odours and give on-going protection against re-infection.

**DETANGLING . LEAVE-IN . FAST AND EASY**



**CONTROL CURL / D.FRIZZ**

**juuce**  
for thirsty hair



# 2 IN 1 STYLING CREAM

KAKTIS

Moisturising styling cream with a light hold helps hydrate and control frizz in dry, frizzy or wrecked hair.  
Anti-heat + UV + humidity + oxidation protection.

**MOISTURISE . HYDRATE . CONTROL FRIZZ**



# SMOOTHING BALM

AFTER MIDNIGHT

Humidity resistant cream tames all curly coarse unruly hair to seal, shine and d.frizz.  
Anti-heat + UV + humidity + oxidation protection.

**TAME CURL . SHINE . CALM FRIZZ**



# CURLING BALM

KINKY

Ultimate curl definition, control and hold that turns frizz into curl without the crunch.

Can be used in wet or dry hair. Anti-heat + UV + humidity + oxidation protection.

**DEFINE . D.FRIZZ . BOOST CURL**



# 2 IN 1 CONTROL MOISTURISING SPRAY

ANGEL MIST

Infused with moroccan argan oil instantly detangles and repairs while locking in moisture protecting nutrients to defend against flyaway/frizz caused by flat irons, chemical treatments and high humidity.

Anti-heat + UV + humidity + oxidation protection.

**TAME FRIZZ . HYDRATE . DEFINE CURL**

**juuce**  
for thirsty hair



STRAIGHTENING

**juuce**  
for thirsty hair



# STRAIGHTENING CREAM

## MIRACLE STRAIGHT

Transform frizzy, fragile hair into straight, smooth and soft hair. Infused with natural Australian botanicals to control moisture levels and give maximum smoothness without drying out the hair.

Anti-heat + UV + humidity + oxidation protection.

**D.FRIZZ . STRAIGHTEN . SMOOTH . SOFTEN**

---



# STRAIGHTENING OIL SPRAY

## HEAT SHIELD

Transforms frizzy coarse unruly hair into straight, smooth and soft hair.

Oil base protects during and after 200°C heat styling by locking in moisture and nutrients that help to extend colour life and strengthen resistance to breakage. Anti-heat + UV + humidity + oxidation protection.

**200 ° C+ HEAT . DEFENCE . SMOOTH STRAIGHT**



**BOOST VOLUME**

**juuce**  
for thirsty hair

# BODY BOOSTING SPRAY

## AMP IT UP

Boosts volume at the roots to increase body and bounce in all types of fine hair.  
Anti-heat + UV + humidity + oxidation protection.

**ROOT LIFT . VOLUME . FULL BODY**

---



# THICKENING CREAM

## DOUBLE UP

Thickens fine, limp or thinning hair adding volume and body while also strengthening and protecting.  
Anti-heat + UV + humidity + oxidation protection.

**BOOST BODY . VOLUMISE . STRENGTHEN**

---



# STYLING FOAM

## XAGERATE MOUSSE

Increases body and bounce for fuller looking hair with thickening control. Contains light vitamins to enhance condition and shine.

**THICKEN . SHINE . BOOST VOLUME**





**CONTROL TEXTURE**

**juuce**  
for thirsty hair

# MATT STYLING POWDER

## DUST UP

A matt powder that gives hair the ultimate windswept look. This non tacky, oil-free powder gives weightless texture and volume and is great for fine hair.



## TEXTURE . VOLUME

---

# STYLING LOTION

## SCULPT LOTION

Creates body and bounce at the roots. Use prior to blow drying or styling to leave hair feeling natural with super body and shine.



## CONTROL . SHINE . BODY AND BOUNCE

---

# FIBRE CREAM

## MESSED UP

An oil free, spreadable fibrous cream which delivers control, texture and a lasting hold with a matt finish.



## TEXTURE . CONTROL . MATT FINISH



# BEACH TEXTURE SPRAY

SEA AIR MIST

Creates volume and texture separation and control for a natural, touchable beach tousled look.

**MOVEMENT . VOLUME . BEACH TEXTURE**



# WAX SPRAY

WAKE UP

Wearable wax spray adds body, texture and shape with a matt finish.

Simply spray into undone hair for a choppy, dimensional, edgy, lived in look.

**TEXTURE . SHAPE . FULL THROTTLE HOLD**



STRONG HOLD / SHINE

**juuce**  
for thirsty hair



# SHINE SPRAY

ARGAN SHIMMER

Instantly provides a shiny, smooth, polished finish with a soft feminine look.

Suitable for all hair types, leaving the hair silky smooth without weighing it down.

**SMOOTH . SOFTEN . POLISHED FINISH**



# GLOSS AND FIX STYLER

FIX N SHINE

Versatile styling and finishing spray to fix and hold. Spray into roots to boost root lift and add body and bounce. Ideal for hot roller setting. Finish without blowdrying for strong hold shine.

**TEXTURE . GLOSS . MAXIMUM HOLD**

**juuce**  
for thirsty hair



# FIBRE STRENGTH GEL

## SUMO GRIP

Get a grip with guts. Maximum hold gel goops hair together with webbing fibre control that lasts all day long in wet or dry hair.

**CONTROL . TEXTURE . EXTREME HOLD**

---

# HAIR LACQUER

## STUCK UP

Holds any shape with maximum gravity defying control and anti oxidant protection to slow colour fade but still brushes out.

**STRONG HOLD . CONTROL . BRUSH OUT FORMULA**



**juuce**  
for thirsty hair

## PRESCRIPTION CHART

### JUUCE SHAMPOOS AND CONDITIONERS

HAIR TYPES	BENEFITS DELIVERED	SHAMPOOS AND CONDITIONERS
chemically treated	moisturise / hydrate / restore	Silk Hydrate
colour treated	protect / revive / defend	Colour Life
thinning / fine	thicken / boost / increase volume	Full Volume
damaged	nourish / repair / rejuvenate	Ultra Repair
blonde	soothe / tone / reduce yellow	Ultra Blonde
frizzy / coarse / unruly	tame frizz / smooth / calm curl	Miracle D.frizz
extreme blonde	remove yellow / save blonde / intense tone	Silver Blonde
frizzy / fragile / dry	replenish / soothe / strengthen	Argan Soft

### JUUCE SPECIALTY SHAMPOOS AND CONDITIONERS

HAIR TYPES	BENEFITS DELIVERED	SHAMPOOS AND CONDITIONERS
thinning / itchy scalp	thicken / boost / increase volume	Peppermint
oily / product build	stimulate / treat / scalp care	Deep Cleanse
flaky / itchy / scaly	balance / refresh / remove	Anti Dandruff
no water shampoo	refresh / remove oily residue	Dirty Deeds
no water conditioner	soften / condition / smooth	Silky Soft Xpress
head lice	removes and protects against lice	Knot Knitty

## PRESCRIPTION CHART

# JUUCE DAILY LEAVE IN MOISTURE, REPAIR AND PROTECTING TREATMENTS

HAIR TYPES AND CONDITION	DAILY SPRAY REPAIR / PROTECT	DAILY ENDS REPAIR / PROTECT
chemically treated dry	20 in One Miracle / Knot Knotty	Solar Enz
chemically treated very dry	20 in One Miracle / Knot Knotty	Solar Enz
colour treated dry	20 in One Miracle / Knot Knotty	Solar Enz
colour treated very dry	20 in One Miracle / Knot Knotty	Solar Enz
fine very dry	Instant Rehab	Solar Enz
fine extremely dry	Instant Rehab	Solar Enz
damaged very dry	Instant Rehab / Reviva Cream	Smooth Enz
damaged extremely dry	Instant Rehab / Reviva Cream	Smooth Enz
blonde very dry	20 in One Miracle / Reviva Cream	Blonde Revivenz
blonde extremely dry	Instant Rehab / Reviva Cream	Blonde Revivenz
frizzy / coarse / unruly / very dry	Botanic Oil Spray / Reviva Cream	Botanic Oil Serum
frizzy / coarse / unruly / extremely dry	Botanic Oil Spray / Reviva Cream	Botanic Oil Serum
frizzy / fragile / very dry	Botanic Oil Spray / Reviva Cream	Botanic Oil Serum
frizzy / fragile / extremely dry	Botanic Oil Spray / Reviva Cream	Botanic Oil Serum



## PRESCRIPTION CHART

## JUUCE INTENSE NOURISHMENT / WEEKLY REPAIR TREATMENTS / RECONSTRUCTING

HAIR TYPES AND CONDITION	INTENSE NOURISHING	WEEKLY REPAIR / RECONSTRUCT
chemically treated dry	Repair Mask	Shock Treatment / Majik Intense Lok
chemically treated very dry	Repair Mask	Shock Treatment / Majik Intense Lok
colour treated dry	Repair Mask	Shock Treatment / Majik Colour Lok
colour treated very dry	Repair Mask	Shock Treatment / Majik Colour Lok
fine very dry	Repair Mask	Shock Treatment / Majik Intense Lok
fine extremely dry	Moisture Mask	Shock Treatment / Majik Intense Lok
damaged very dry	Repair Mask	1 Minute Treatment / Majik Intense Lok
damaged extremely dry	Moisture Mask	1 Minute Treatment / Majik Intense Lok
blonde very dry	Blonde Mask	1 Minute Treatment / Majik Blonde Lok
blonde extremely dry	Blonde Mask	1 Minute Treatment / Majik Blonde Lok
frizzy / coarse / unruly / very dry	Moisture Mask	1 Minute Treatment / Majik Intense Lok
frizzy / coarse / unruly / extremely dry	Moisture Mask	1 Minute Treatment / Majik Intense Lok
frizzy / fragile / very dry	Repair Mask	1 Minute Treatment / Majik Intense Lok
frizzy / fragile / extremely dry	Moisture Mask	1 Minute Treatment / Majik Intense Lok

## PRESCRIPTION CHART

# JUUCE STYLING AND FINISHING CONTROL GUIDE

HAIR TYPE	FRIZZ CONTROL	STYLING / FINISHING
frizzy / fragile / curly	frizz control / moisture / texture	Kaktis
frizzy / coarse / unruly	tame / shine / calm / enhance / d.frizz	After Midnight
frizzy / curly / wavy	define / boost / d.frizz	Kinky
frizzy / fragile / curly	define / control / moisturise / tame	Angel Mist
HAIR TYPE	STRAIGHTENING CURLY/WAVY	STYLING / FINISHING
frizzy / fragile / curly	straighten / smooth / protect / hydrate	Miracle Straight
frizzy / unruly / curly	straighten / protect / shine / control	Heat Shield
HAIR TYPE	BOOST VOLUME	STYLING / FINISHING
fine / flat	body / root lift / volume	Amp It Up
thinning / fine	thicker / fuller / volume	Double Up
thinning / fine / flat	body / volume / lift	Xagerate Mousse
HAIR TYPE	TEXTURE CONTROL	STYLING / FINISHING
all hair types	thicken / texturise / boost	Dust Up
all hair types	style / sculpt / finish	Sculpt Lotion
all hair types	texturise / control / thicken	Messed Up
all hair types	beach texture / separate / layer	Sea Air Mist
all hair types	control / texturise / boost / finish	Wake Up
HAIR TYPE	STRONG HOLD OR SHINE	STYLING / FINISHING
all hair types	smooth / soften / shine	Argan Shimmer
all hair types	gloss / texture / maximum hold	Fix n Shine
all hair types	extreme hold / texture	Sumo Grip
all hair types	ultimate hold / control	Stuck Up

## RECOMMENDATION FOR HOME HAIR CARE

### SHAMPOO

- Colour Life
- Ultra Repair
- Miracle D.frizz
- Argan Soft
- Silk Hydrate
- Full Volume
- Ultra Blonde
- Silver Blonde

### CONDITIONER

- Colour Life
- Ultra Repair
- Miracle D.frizz
- Argan Soft
- Silk Hydrate
- Full Volume
- Ultra Blonde
- Silver Blonde

### SPECIALTY SHAMPOO/CONDITIONER

- Peppermint
- Deep Cleanse
- Anti-Dandruff
- Dirty Deeds
- Silky Soft Xpress

### INTENSE NOURISHING MASK

- Repair Mask
- Blonde Mask
- Moisture Mask

### REPAIR/RECONSTRUCT TREATMENT

- Shock Treatment
- 1 Minute Treatment
- Intense-Lok Majik
- Colour-Lok Majik
- Blonde-Lok Majik

### BLONDE SEMI-PERMANENT CONDITIONING FOAM

- Blonde Violet
- Blonde Violet Plus

### REPAIR/PROTECT MOISTURISING LEAVE-IN TREATMENT

- Knot Knotty
- Instant Rehab
- 20 in One Miracle
- Reviva Cream
- Smooth Enz
- Blonde Revivenz
- Solar Enz
- Botanic Oil Spray
- Botanic Oil Serum

### HEAD LICE TREATMENT AND PREVENTION

- Knot Knitty Lice Gel
- Knot Knitty Lice Spray

### STYLING AND FINISHING

#### Control Curl/D.frizz

- Kaktis
- After Midnight
- Kinky
- Angel Mist

#### Straightening

- Miracle Straight
- Heat Shield

#### Boost volume

- Amp it Up
- Double Up
- Xagerate

#### Control texture

- Dust Up
- Sculpt Lotion
- Messed Up
- Sea Air Mist

#### Strong hold/shine

- Argan Shimmer
- Fix n Shine
- Sumo Grip
- Stuck Up

#### BARBER ART STYLING

- Construct Styling Clay
- Fierce Fibre Control
- Intense Original Wax
- Extreme Hard Mud
- Supreme Classic Shaypa
- Rugged Firming Fibre



**BARBER ART**



**THE ART OF STYLING**

**juuce**



## THE BENEFITS OF BEESWAX...

**MOST OF US WHO PREFER NATURAL INGREDIENTS LOVE THE WORK THAT BEES DO AND ANOTHER AMAZING INGREDIENT MADE BY BEES, BEESWAX, IS FOUND IN MOST OF OUR BARBER ART STYLING WAXES.**

Primarily used by bees to make their honeycombs, beeswax is becoming increasingly popular to use in skincare and haircare products. Known mostly for its conditioning properties it is now regularly used in lip balms, hand creams and moisturisers.

Beeswax is a great natural alternative to synthetic ingredients that dry out the hair and give the hair a heavy, greasy feel. Natural and full of antioxidants, it helps retain the natural moisture of the hair and prevents free radical damage brought by pollution and heat.

Beeswax is an important ingredient in moustache wax and hair pomades, which make hair look sleek and shiny. The wax is light, does not have any overpowering smell, and contains natural moisturising properties that make it perfect for preventing frizz and dryness.

**JUST ONE MORE REASON TO PROTECT OUR POLLINATORS...**

*if bees go, we go too!*

**juuce**  
for thirsty hair



**BARBER ART**  
★

## **CONSTRUCT STYLING CLAY**

Perfect for creating massive texture with mega hold for long lasting hairstyles.



**BARBER ART**  
★

## **FIERCE FIBRE CONTROL**

Dry fibre wax with strong hold, spreadable, pliable all day control, add shape and define style.



**BARBER ART**  
★

## **INTENSE ORIGINAL WAX**

Shapes hair and beard for all day texture control with firm hold.



**BARBER ART**  
★

## **EXTREME HARD MUD**

Low sheen  
styling mud  
with brutal hold  
to last all day.



**BARBER ART**  
★

## **SUPREME CLASSIC SHAYPA**

Shapes hair for  
mouldable all day  
stable hold.



**BARBER ART**  
★

## **RUGGED FORMING FIBRE**

Forming fibre with  
matt finish and  
tough hold to  
last all day.